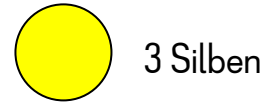
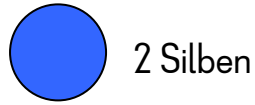
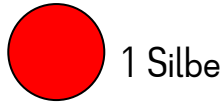
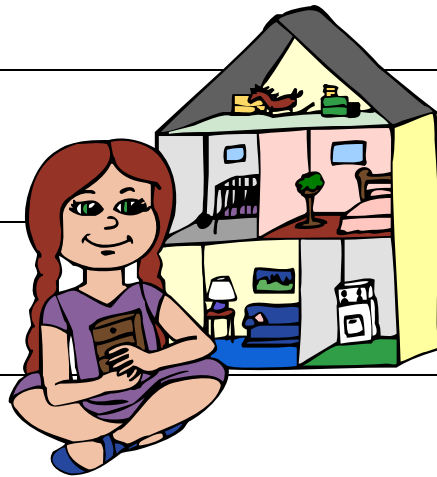
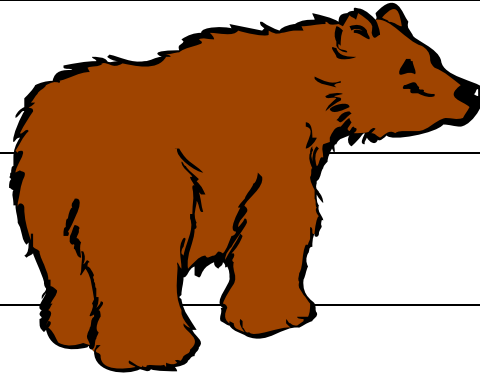


Wie viele Silben? Klatsche zu den Wörtern!



Bär	<input type="radio"/>
Wasser	<input type="radio"/>
Banane	<input type="radio"/>
Mond	<input type="radio"/>
Hund	<input type="radio"/>
Telefon	<input type="radio"/>
Apfel	<input type="radio"/>
Kasten	<input type="radio"/>
Puppenhaus	<input type="radio"/>



Lösung	
 1 Silbe	 2 Silben
	 3 Silben
Bär	
Was - ser	
Ba - na - ne	
Mond	
Hund	
Te - le - fon	
Ap - fel	
Kas - ten	
Pup - pen - haus	